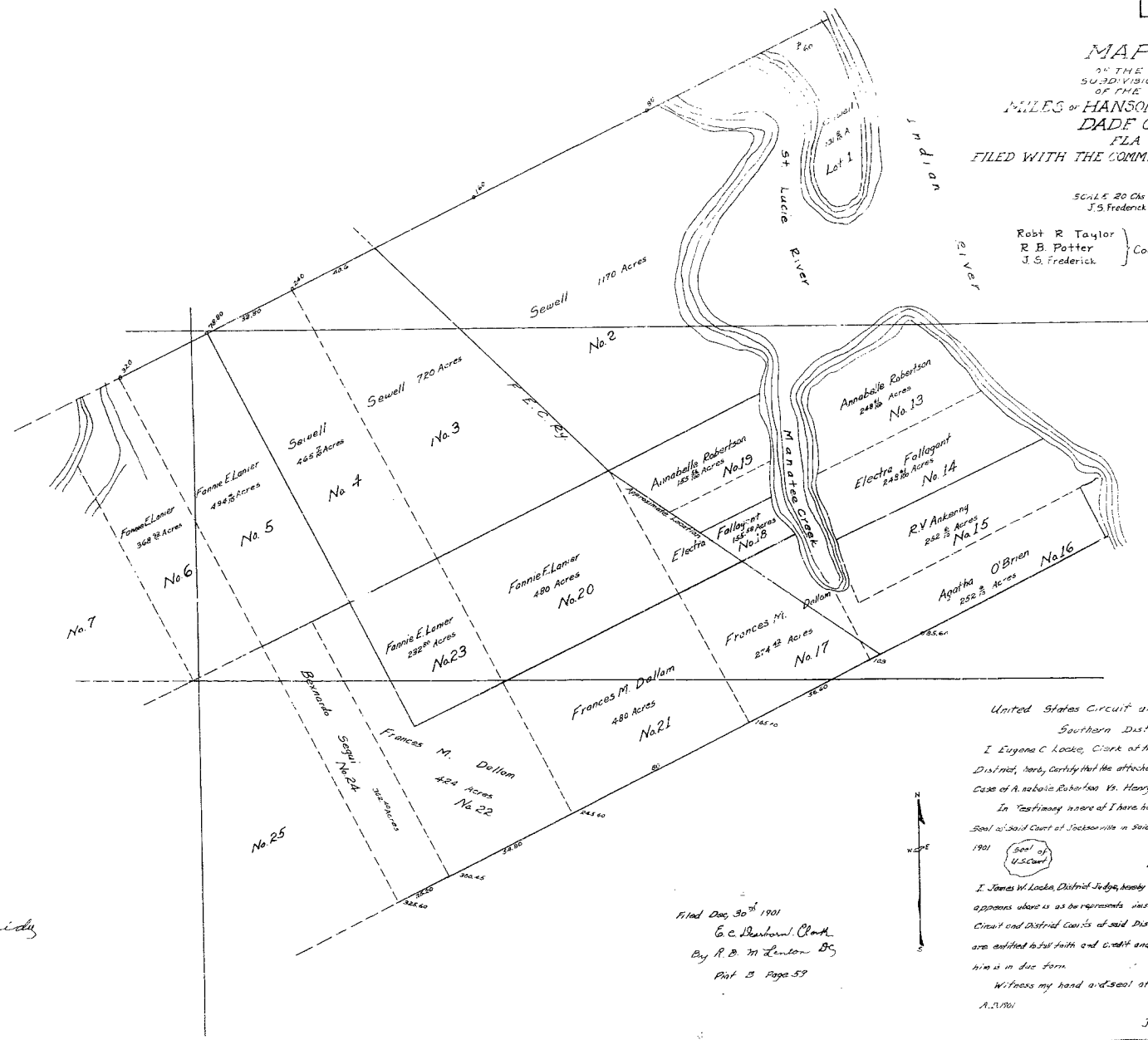


THIS IS A TRUE COPY OF THE ORIGINAL
PLAT OF RECORD OF "MILES OF HANSON
GRANT" PLAT BOOK 1, PAGE 11, IN THE
BEACH COUNTY, FLORIDA, NOW MARTIN COUNTY

STATE OF FLORIDA
COUNTY OF BEACH
FILED THIS 22nd DAY OF JULY 1901
AND DULY RECORDED ON THE 22nd
DAY OF JULY 1901 IN BOOK L OF
PLATS ON PAGE 11, RECORDED BY
EUGENE O. LOCKE
BY _____
DEPUTY CLERK

MAP
OF THE
SUBDIVISION
OF THE
**MILES OF HANSON GRANT
DADE CO
FLA**
FILED WITH THE COMMISSIONERS REPORT

SCALE 20 Oas in
J.S. Frederick del.
Robt R Taylor
R B Potter } Commissioners
J.S. Frederick



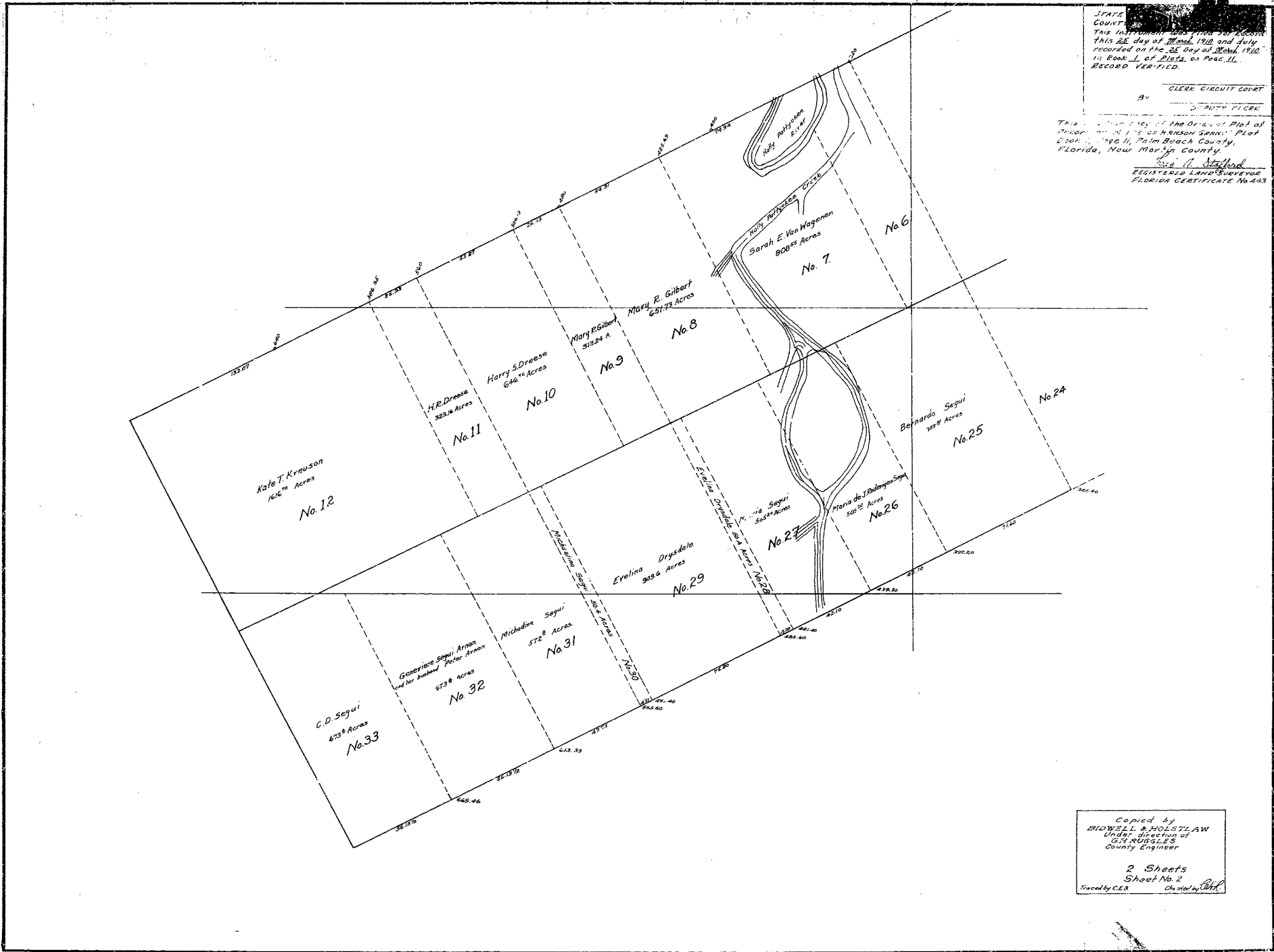
Copied by
BIDWELL & POLSTRAW
Under Direction of
CHAS. EUGELINK
County Engineer
2 Sheets
Sheet No. 1
Drawn by C.E.B. Checked by B.A.P.

STATE OF FLORIDA
COUNTY OF BEACH
I, HUBERT CLAYTON, Notary Public,
do hereby certify that the
above and foregoing is a true and
correct copy of a _____
_____ as the same appears
from of record in Beach County, Florida,
in Book No. 1 of _____
_____ at page _____
Signed and attested my hand and
Official Seal of Notary Public for
Beach County, Florida, at _____
this _____ day of _____ A.D. 1901.

United States Circuit and District Courts
Southern District of Florida.
I, Eugene O. Locke, Clerk of the Circuit of the United States for said
District, do hereby certify that the attached Plat is a true copy of Plat filed in the
case of A. Nelson vs. Henry T. Sewell et al, on file in my office.
In Testimony whereof I hereunto set my hand and affixed the
Seal of said Court at Jacksonville in said District the 19th day of December A.D.
1901
Eugene O. Locke, Clerk.

I, James W. Locke, District Judge, hereby certify that Eugene Locke whose signature
appears above is as he represents himself to be the Clerk of the United States
Circuit and District Courts of said District and his qualifications as such
are sufficient to set forth and credit and that the proceedings therein
are in due form
Witness my hand and seal at Jacksonville, Florida, this _____ day of
A.D. 1901
James W. Locke, Judge

Filed Dec 30th 1901
E.C. Richardson, Clerk
By R.B.M. Linton, B.S.
Pat 3 Page 39



STATE OF FLORIDA
 COUNTY OF PALM BEACH
 This instrument was filed for record
 this 22 day of June, 1926 and July
 recorded on the 22 day of July, 1926
 in Book 1 of Lists on Page 11.
 RECORD VERIFIED.

CLERK CIRCUIT COURT
 BY _____

This is a true and correct copy of the Original Plat of
 the above described land as shown herein. Plat
 Book 1, Page 11, Palm Beach County,
 Florida, New Map No. 10.
 Wm. H. Stafford
 REGISTERED LAND SURVEYOR
 FLORIDA CERTIFICATE No. 443

Compiled by
 BIDWELL & HOLSTLAW
 Under direction of
 C. H. NUGGLES
 County Engineer
 2 Sheets
 Sheet No. 2
 Traced by C.E.B. Checked by C.H.L.